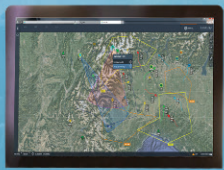


**SMART  
AND TO THE  
POINT.**

**COMBAT  
PROVEN**



# DRONE DOME™

## C-UAS – Drone Detection, Identification, Classification, Neutralization, and Interception System

### End-to-End Solution for Securing Airspace

DRONE DOME is a comprehensive, combat-proven, operational system for fully automated detection, identification, classification, neutralization, and interception of aerial threats including various types of drones.

Managed by a C2 system with built-in decision-making and AI capabilities, the multi-sensor, multi-effector, multilayered modular solution is comprised of a variety of passive and active sensors and effectors that together defeat the specific threats faced by each customer.

DRONE DOME integrates input from varied sensors, effectors, C2 and other external systems – combining and correlating it all into a single coherent Air Situational Picture (ASP) with a high update rate.

### Benefits

- Complete, end-to-end solution
- Delivers full situational awareness
- Defeats any drone
- Combat-proven and operational
- 360° coverage
- Can be operated locally or remotely
- Open architecture, interoperability, integrates unlimited sensors & effectors of all types
- Modular configuration tailored to customer's requirements
- Compact, lightweight, and easy to deploy
- Rugged, MIL-Standard
- Cost-effective with excellent performance-to-price ratio





## Typical System Components

### RADAR



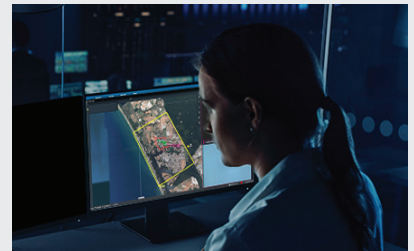
The RPS-42 MHR Radar with a range of up to 5 km and the RPS-82 ieMHR Radar with a range of up to 10 km are both AESA pulse Doppler, MIL-STD, Multi-Mission Radars. They provide 360° high-elevation coverage, with high reliability and superior performance. Compact and mobile phased array radars, they handle multiple targets at a wide range of velocities.

### E/O Camera (SPEED-ER) Sensor



This high-performance, high-resolution, high-sensitivity day & night camera, with thermal imaging and wide FOV channels and continuous electronic zoom, provides automatic detection, recognition and identification at up to 8 km. Features include video enhancement and video motion detection (VMD).

### Command and Control (C2)



The DRONE DOME's C2 system advanced open architecture enables the integration of multiple sensors and effectors of various types, and combines all input to create a unified air situational picture including layers from external C2 systems (e.g., UTM and ATM). The system can be operated by a single user or multiple users in a regional deployment. It can be controlled locally or remotely, and can share information using a standard protocol.

### RF Direction Finder (DF) Sensor



The passive 3D RF-DF high-reliability sensor provides the direction and range estimation to the drone, and in its demodulation mode, it provides the serial number and 3D location of the drone and its controller.

### RF Jammer



The directional/omnidirectional multi-band jamming system blocks communications & GNSS signals. It enables the planning of jamming activities in advance, as well as the design of jamming tasks that control the frequency and power of each frequency

The C2 enables the manual assignment of target classification (Friend, Hostile, Civil, Unidentified), designates a target as a priority and shares the target with external systems. It records all operational events and enables later playback for efficient briefings. The C2 includes operational, maintenance, and debriefing modes.

### RF Differential Time of Arrival (DTOA)



The DTOA sensor detects, classifies, and identifies drone and operator 3D locations using passive RF sensors, and includes several omnidirectional antennas.

**A variety of components & configurations Fast Deployment, Mobile, Stationary, Naval are provided. Systems are deployed at major airports & strategic facilities worldwide - selected for their advanced capabilities & after-sale support.**



AIR & MISSILE DEFENSE SYSTEMS DIVISION

Tel: +(972)73-336-7990

Fax: +(972)73-336-7989

Email: [airsuper\\_mkt@rafael.co.il](mailto:airsuper_mkt@rafael.co.il)

HQ Tel: +(972)73-335-4714

Fax: +(972)73-335-4657

Email: [Intl-mkt@rafael.co.il](mailto:Intl-mkt@rafael.co.il)

[www.rafael.co.il](http://www.rafael.co.il)

DRONE DOME™ is a Trademark of RAFAEL Advanced Defense Systems Ltd.  
UNC. 67923-02.23 ENG/Graphic Design Dep/410